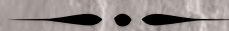




EXQUISITE DISTINCTION  
SUPERIOR QUALITY





Seagrass

## ABOUT US

**Savannah Stone Source** is a natural stone and porcelain supplier, offering exclusive designs and exceptional products to best fulfill your design vision. Born out of 30 years of experience in the stone business, Savannah Stone Source now sources materials from around the globe. As a natural stone and porcelain supplier,



William & Jonathon Rhangos - Founders



Savannah Stone Source excels at identifying, designing, and manufacturing unique products and importing them at competitive prices for our distribution network. Our knowledgeable staff works with our global partners, architects, and design professionals to identify the most appropriate products to ensure a positive experience with an extraordinary outcome.

# CONTENTS

4	<b>OLD WORLD TABBY COLLECTION</b>
6	<i>OYSTER PORCELAIN</i>
9	<i>BENEFITS OF PORCELAIN</i>
12	<i>JULIETTE GORDON LOW BIRTHPLACE</i>
14	<b>CORAL SELECT COLLECTION</b>
15	<i>CORAL SELECT PORCELAIN PAVERS</i>
20	<b>REEF COLLECTION</b>
21	<i>REEF PORCELAIN DETAILS</i>
24	<b>CLEFT COLLECTION</b>
25	<i>CLEFT COLLECTION DETAILS</i>
34	<b>PORCELAIN PAVERS</b>
36	<b>TUMBLED PORCELAIN PAVERS COLLECTION</b>
38	<b>SANDSTONE COLLECTION</b>
51	<i>SANDSTONE PAVER DETAILS</i>
52	<i>SANDSTONE ACCESSORIES</i>
54	<i>SANDSTONE COPING &amp; TREADS</i>



## SPOTLIGHT

*JULIETTE GORDON LOW BIRTHPLACE / p12*

60	<b>TUMBLED SANDSTONE COLLECTION</b>
61	<i>TUMBLED SANDSTONE DETAILS</i>
62	<b>STEP TREADS</b>
63	<b>PACKAGING</b>
64	<b>PAVER DETAILS</b>
66	<b>TUMBLED LIMESTONE COLLECTION</b>
67	<i>TUMBLED LIMESTONE DETAILS</i>
69	<i>BENEFITS OF LIMESTONE</i>
73	<i>TUMBLED LIMESTONE COPING &amp; TREADS</i>
74	<b>BECOMING A DEALER</b>
75	<b>OUR MATERIALS</b>



OLD WORLD TABBY CONCRETE PAVER

\* Concrete version available by special order



OLD WORLD TABBY RUINS AT CUMBERLAND ISLAND, GEORGIA

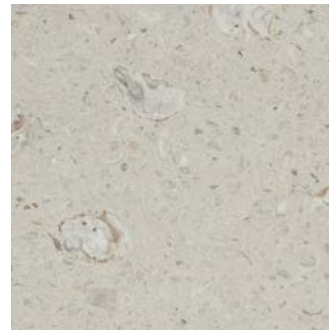
**Old World Tabby** was born out of a centuries old building technique, using oyster shell as the core aggregate to create foundations, walls and floors in the southeastern coastal region. Today many of these structures still exist as a testament to the beauty and strength of the process. Today the Old World Tabby Company has reimagined the use of oyster shells with modern technology to create shell products in hand made concrete and porcelain. Due to the length of time needed to create our “original” concrete product and the limited production quantity, we made a decision to pair with Italy in making a very unique, exclusive porcelain version. The artistry and the detail of the Old World Tabby coupled with Italy’s expertise and years of experience bring the product to life. Savannah Stone Source can now bring a more affordable, maintenance free option to the industry that can be enjoyed by all.

Offered in three coastal colors our products are an ideal surface solution for pools, decks, porches, counter tops and architectural elements. Old World Tabby is an exclusive, one of a kind product.

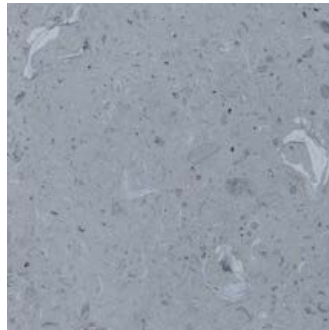
# OLD WORLD TABBY OYSTER PORCELAIN



**White Paver / Tile**  
 12"x24"  
 24"x24"  
 24"x36"  
 12"x24"  
 24"x24"  
 24"x48"



**Sand**  
 12"x24"  
 24"x24"



**Grey**  
 12"x24"  
 24"x24"



**Coping**  
 13"x24"x3cm

PRODUCT	THICKNESS	COVERAGE	SIZES
12"x24" Calibrated Single Size Pack (Rectified edges)	3/4 inch	247.91 sq ft	12"x24"
24"x24" Calibrated Single Size Pack (Rectified edges)	3/4 inch	232.41 sq ft	24"x24"
24"x36" Calibrated Single Size Pack (Rectified edges)	3/4 inch	290.63 sq ft	24"x36"
Coping - Finished Glazed Front on One Long Side	1.18 inches	13"x24"	3 cm
Coping - Finished Glazed Front on Two Long Sides	1.18 inches	13"x24"	3 cm



\* Fabricated round edge available upon request  
 \* These pavers are available for mortar set, sand set, gravel set, or grass set applications



*Old World Tabby Oyster Porcelain White*



*Old World Tabby Oyster Porcelain White*



*Old World Tabby Oyster Porcelain White*

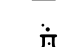
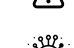


*Old World Tabby Oyster Porcelain White*

## BENEFITS OF PORCELAIN

Porcelain pavers and tile are weather resistant stoneware for any type of outdoor flooring.

It is hard-wearing, anti-slip and capable of withstanding heavy loads. It can be installed on grass, sand, gravel, or mortar set over concrete base. It can also be used in approved raised installation systems.

- |  |   |
|--|---|
|  Frost resistant                      |  Reusable                            |
|  Non-fading                           |  Anti-slip                           |
|  Look of real stone                   |  Sand and gravel set possible        |
|  Resistant to acid, chemicals, salt |  Resistant to loads                |
|  Resistant to mildew & mold damage  |  Suitable for raised installations |
|  Easy to clean                      |  Long lasting                      |
|  Easy to install                    |  Impervious                        |
|  Easy to remove                     |   |

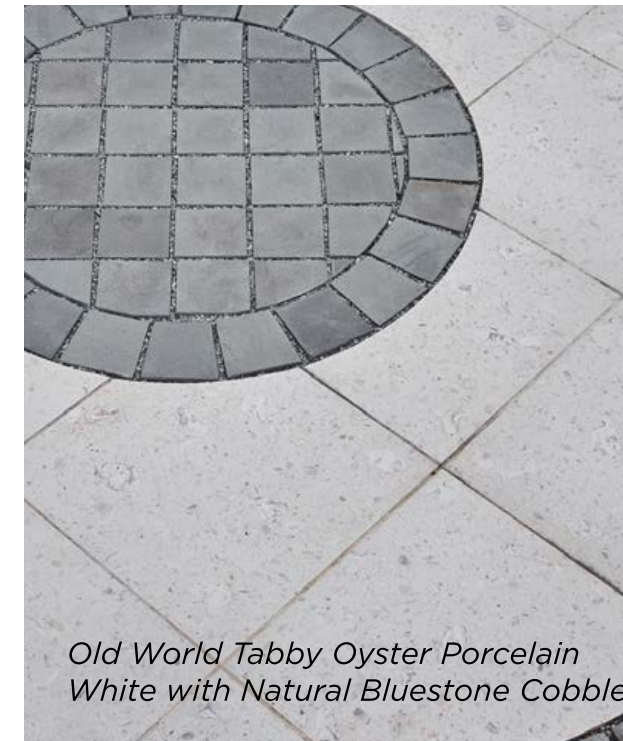




*Old World Tabby Oyster Porcelain  
White with Natural Bluestone Cobble*



*Old World Tabby Oyster Porcelain  
White with Natural Bluestone Cobble*



*Old World Tabby Oyster Porcelain  
White with Natural Bluestone Cobble*



*Old World Tabby Oyster Porcelain  
White with Natural Bluestone Cobble*

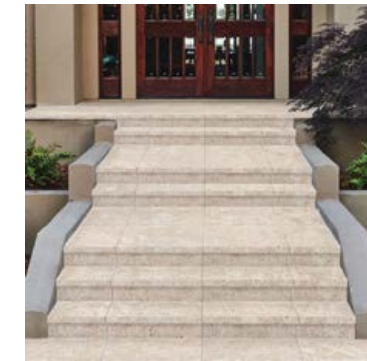
Savannah Stone Source's Old World Tabby Oyster White pavers and natural bluestone cobble tie the old in with the new; at the Juliette Gordon Low Birthplace House Museum's garden and courtyard (above), located in downtown Savannah. Juliette Gordon Low started Daisy's club, which later became the Girl Scouts of the USA (GSUSA). Now owned by GSUSA, the Juliette Gordon Low Birthplace is a "house museum" and gathering place for girls and the public.





## CORAL SELECT PORCELAIN PAVERS

**Old World Tabby Coral Select Porcelain** is everything you love about the look of natural coral. Coral Select is featured in 28 faces so the pattern almost never repeats. It is an ideal selection for pool decks, patios, porches and vertical architectural elements. Coral Select is a one-of-a-kind paver offered exclusively by Savannah Stone Source.



Coral Select Paver / Tile *(Grip Finish)*

- 12"x24"
- 24"x24"
- 24"x36"
- 12"x24"
- 24"x24"
- 24"x48"

Coping

13"x24"x3cm

PRODUCT	THICKNESS	COVERAGE	SIZES
12"x24" Calibrated Single Size Pack (Rectified edges)	3/4 inch	247.91 sq ft	12"x24"
24"x24" Calibrated Single Size Pack (Rectified edges)	3/4 inch	232.41 sq ft	24"x24"
24"x36" Calibrated Single Size Pack (Rectified edges)	3/4 inch	290.63 sq ft	24"x36"
Coping - Finished Glazed Front on One Long Side	1.18 inches	13"x24"	3 cm
Coping - Finished Glazed Front on Two Long Sides	1.18 inches	13"x24"	3 cm

\* Fabricated round edge available upon request

\* These pavers are available for mortar set, sand set, gravel set, or grass set applications





*Old World Tabby Coral Select Porcelain*



*Old World Tabby Coral Select Porcelain*



*Old World Tabby Coral Select Porcelain*



*Old World Tabby Coral Select Porcelain*



## REEF PORCELAIN DETAILS

**Old World Tabby Reef Porcelain Collection** is meant to remind you of the most unique limestones from across the globe. Light and bright, crisp, clean colors that inspire the soul. Elegant and natural, these pavers never go out of style.



Reef Sand



Reef Ivory



Reef Grey



Reef Ivory Porcelain

PRODUCT	THICKNESS	COVERAGE	SIZES
24"x24" Calibrated Single Size Pack (Rectified edges)	3/4 inch / 22 mm	232.51 sq ft	24"x24"
24"x48" (Rectified edges)	3/4 inch / 22 mm	271.25 sq ft	24"x48"
Coping - Round Edge	2 cm		12"x24"



*Reef Sand Porcelain*



*Reef Ivory Porcelain*



## CLEFT COLLECTION DETAILS

**Cleft** is a curated porcelain sandstone collection suitable for all seasons and perfect for outdoor settings. The natural cleft palette evokes a rustic yet sophisticated design created for unlimited applications. The natural look of Cleft is the result of countless hours of creative design by our artisans to produce a collection of distinction and elegance. From the coast to the mountains, Cleft is a unique product.

Cleft comes in 4 sandstone colors and multiple sizes for single or multiple pattern configurations. Our products are an ideal surface solution for pools, decks, porches, countertops, and architectural elements. Cleft is an exclusive, one-of-a-kind product.



Glacier Black



Bluestone Select



Bluestone Full Color



Blue Lake

PRODUCT	THICKNESS	SIZES
Glacier Black	3/4 inch	36"x24", 24"x24", 24"x12", 12"x12"
Bluestone Select	3/4 inch	36"x24", 24"x24", 24"x12", 12"x12"
Bluestone Full Color	3/4 inch	36"x24", 24"x24", 24"x12", 12"x12"
Blue Lake	3/4 inch	36"x24", 24"x24", 24"x12", 12"x12"
Coping - Finished Glazed Front on One Long Side	1.18 inches	13"x24"x3cm



*Blue Lake Porcelain*



*Blue Lake Porcelain*



*Bluestone Full Color Porcelain*



*Bluestone Full Color Porcelain*





*Glacier Black Porcelain*



*Glacier Black Porcelain*



*Bluestone Select Porcelain*



*Blue Lake Porcelain*

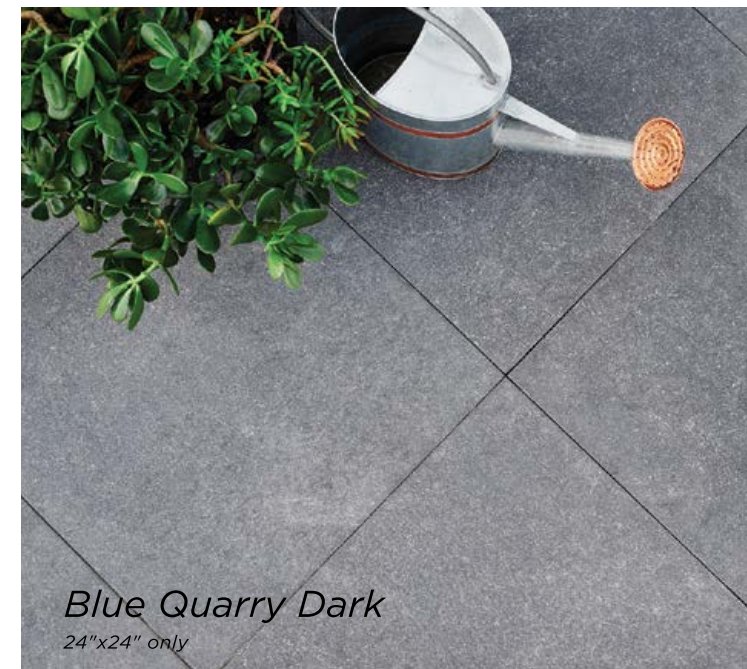


# PORCELAIN PAVERS

*Quartz Porcelain*



*Quartz*  
24"x36" only



*Blue Quarry Dark*  
24"x24" only



*Blue Quarry Light*  
24"x24" only



# TUMBLLED PORCELAIN PAVERS COLLECTION

*Crema di Latte*  
16"x32" only



*Vulcano*



16"x32"

*Vulcano*  
*Crema Di Latte*  
*Grigio*

## SANDSTONE

SANDSTONE  
COLLECTION

Savannah Stone Source Sandstone has a natural cleft finish with beautiful, hand cut or sawn edges.

Each color has been hand selected by us and the quarry to replicate timeless looks, inspired by the coast. We sell our stone in pattern packs, single sizes, as well as steps, treads and copings to match. There are slight variations and colors in the stone, however much more subtle than you will see in a variety of other products.

Our stone is gauged, sized and ready for installation. All sizes, weights and coverage of the sandstone and limestone are nominal.



Seagrass



*Seagrass*



*Stratus*



*Seagrass*

\* Variation and Installation methods may vary in stone



*Seagrass*



*Sterling*



*Sterling*



*Sterling*



*Seagrass*

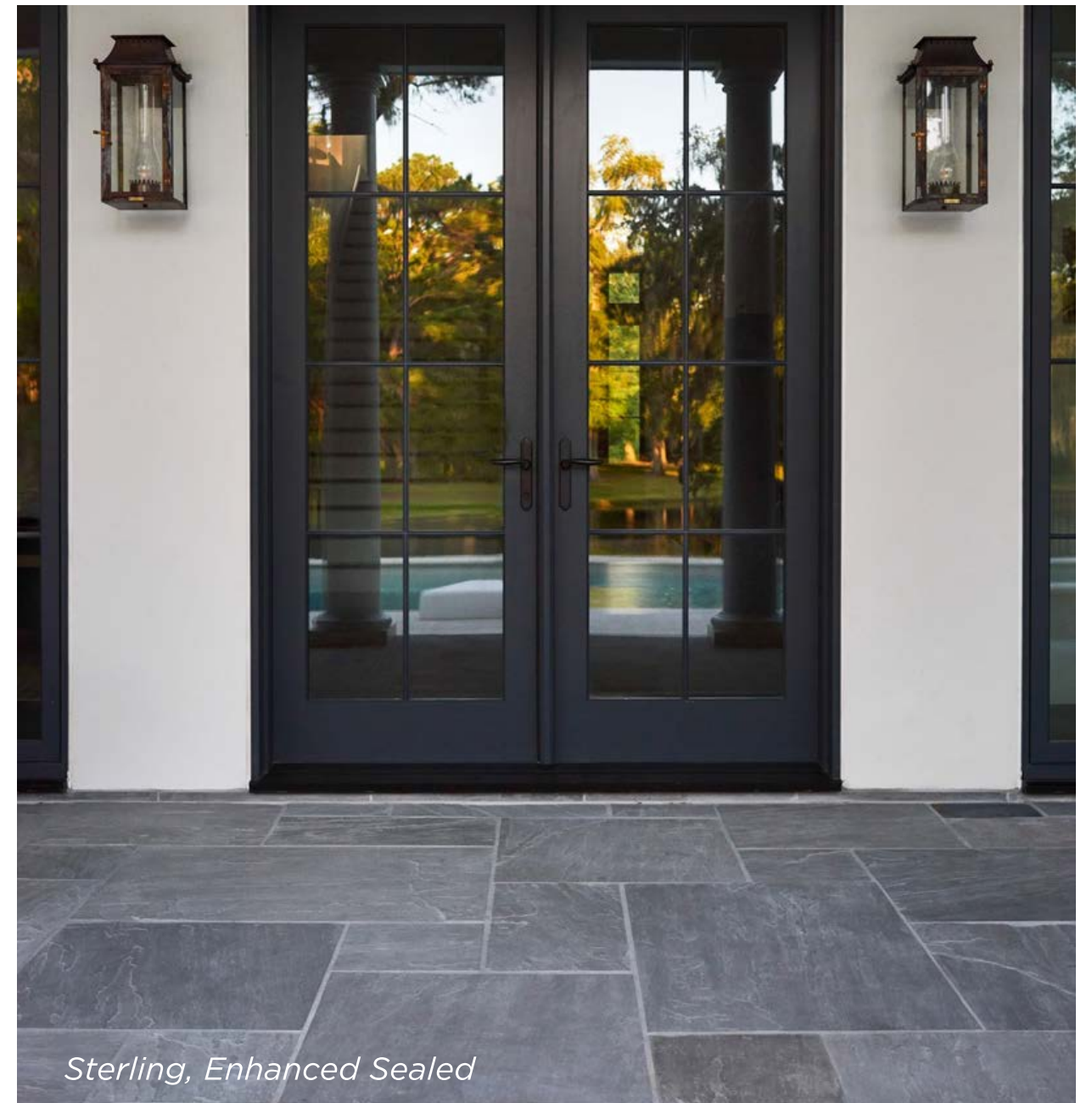


*Seagrass*





*Stratus*



*Sterling, Enhanced Sealed*



*Sterling*



*Seagrass*

PAVER DETAILS



Seagrass



Driftwood

Dark slate grey, light grey, and greybrown tones



Stratus

Black, tan and dark grey tones



Sterling

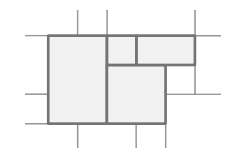
Beautiful soft tones of grey



Seagrass

Tans, light grey, neutral brown and soft neutrals

PRODUCT	THICKNESS	COVERAGE	SIZES
Calibrated 4-Piece Pattern Packs	3/4 inch / 22 mm	234 sq ft	36"x24", 24"x24", 24"x12", 11 1/4"x11 1/4"
24"x24" Calibrated Single Size Pack (Natural finish in sawn or hand cut edges)	3/4 inch / 22 mm	160 sq ft	24"x24"
In Hand Cut & Sawn Edges	Please reference our price sheet for size options		



\* All Sandstones are nominal with natural clefting

# SANDSTONE ACCESSORIES

Sterling



Seagrass



Rockface Wall Cap

Rockface Pier Cap

Bullnose Pier Cap

Stepping Stone

## PIER CAPS & WALL CAPS

COLOR	SIZES	EDGE FINISH
Sterling	14"x24"x2"	Rockface 2, Bullnose 2
	24"x24"x2"	Rockface 4, Bullnose 4
Seagrass	14"x24"x2"	Rockface 2, Bullnose 2
	24"x24"x2"	Rockface 4, Bullnose 4

## STEPPING STONES

COLOR	SIZES	QUANTITY
Sterling (Hand cut)	Mixed	80 pieces per crate
Seagrass (Hand cut)	Mixed	80 pieces per crate

\* Full crates may be broken for an additional crate fee



Seagrass

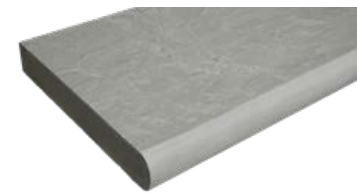
Sterling

## COPING & TREADS

The **Classic Sandstone Coping** are available in multiple sizes and edge profiles including eased edge, bullnose, and rock face. Coping available to match all Classic Sandstone pavers.

The **Classic Sandstone Treads** are 2" thick, they have a natural finish, and the edges are finished in an eased edge, rockface or bullnose down one long side. We stock these in all colors to match our pattern packs at varying sizes and depths.

Please see chart for available color & size options.



Bullnose



Eased Edge



Rock Face



Driftwood

Eased Edge



Stratus

Rock Face



Sterling

Bullnose



Seagrass

Rock Face

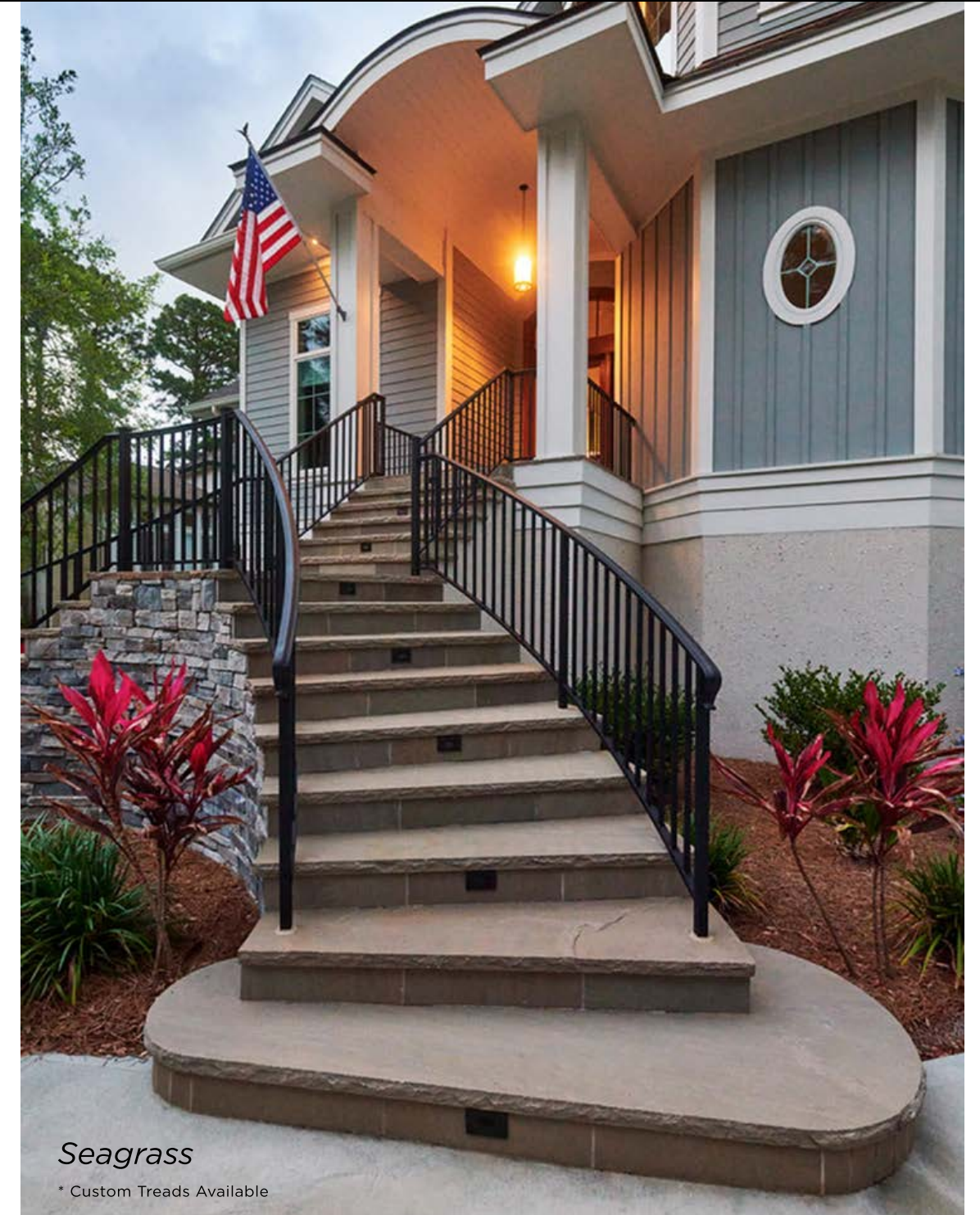
## COPING & TREADS AVAILABLE IN THE FOLLOWING

SIZE	PROFILE	SEAGRASS	STERLING	DRIFTWOOD	STRATUS
12"x24"x2"	Bullnose	•	•	•	×
12"x24"x2"	Eased Edge	•	•	×	×
12"x48"x2"	Bullnose	•	×	×	×
14"x24"x2"	Bullnose	•	×	×	×
14"x48"x2"	Eased Edge	•	•	×	•
14"x48"x2"	Rock Face	×	•	×	•
14"x72"x2"	Eased Edge	•	•	•	×
14"x72"x2"	Rock Face	•	•	•	×
20"x72"x2"	Eased Edge	•	•	•	×
20"x72"x2"	Rock Face	•	•	•	×
20"x48"x2"	Rock Face	×	×	×	•
20"x48"x2"	Eased Edge	×	×	×	•

\* Full crates may be broken for an additional crate fee



*Seagrass*



*Seagrass*

\* Custom Treads Available



*Seagrass*



*Stratus*



*Stratus*



*Stratus*



*Oxford Tumbled Sandstone*

\* All sizes throughout catalog are nominal

## TUMBLLED SANDSTONE

Our Sandstone Collection, hand cut and tumbled, with a Classic European feel. Soft under the feet, soft color palette. This is a perfect choice for a more historic look.



Ashford    Oxford    St. Croix    Greystone    Yorkstone

PRODUCT	THICKNESS	COVERAGE	
4 pc. Pattern	3/4 inch / 22 mm	234 sq ft	(Full crates only)
18"x36"	3/4 inch / 22 mm	175 sq ft	(Full crates may be broken for a fee)
24"x24"	3/4 inch / 22 mm	160 sq ft	(Full crates may be broken for a fee)



Ashford    Oxford    St. Croix    Greystone    Yorkstone

SIZE	EDGE & FINISH	COLORS
14"x24"x2" Gauged and calibrated	Sawn Edge with tumbled finish	Available in all colors



## STEP TREADS

Step treads come in Sterling Sandstone and Midnight Limestone. They are 6" high, and they come in different lengths. Please see our price sheet for sizing. Please be aware all sizes and weights are nominal.

Only in 16"x48"x6"



Sterling

Sandstone

Hand cut on one long side



Midnight

Limestone

Hand cut on all 4 sides



PACKAGING

*Driftwood*

# PAVER DETAILS

We offer our pavers in 3-piece pattern packs in Seagrass/Yorkstone natural, hand cut or sawn & tumbled, and our Sterling/Greystone in natural, hand cut or hand cut & tumbled. They have a 2 3/4" calibrated thickness for vehicular traffic.



Yorkstone

Tans, light grey, neutral brown and soft neutrals



Greystone

Beautiful soft tones of grey



*Sterling Hand Cut Pavers*

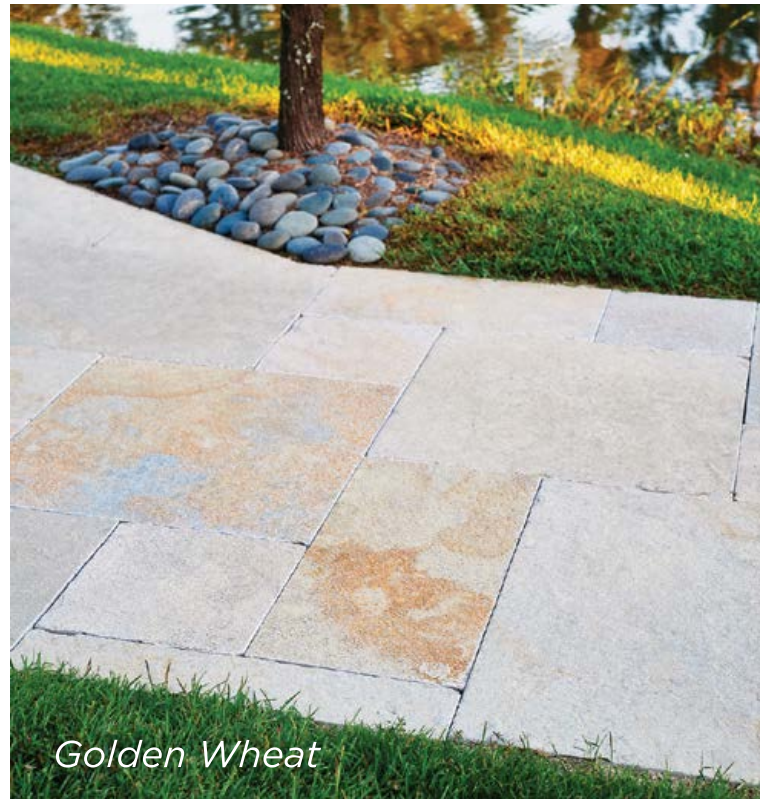


*Seagrass Tumbled Pavers*



# TUMBLED LIMESTONE COLLECTION

*Harbour Grey*



*Golden Wheat*



*Midnight*

PRODUCT	THICKNESS	WEIGHT	COVERAGE	SIZES
Golden Wheat Calibrated 4-Piece Pattern Pack (Natural, machine cut, tumbled)	1 inch	2050 lb	145 sq ft	11"x11", 22"x11" - Full crates only 22"x22", 32.5"x22"
Midnight Calibrated 4-Piece Pattern Pack (Natural, machine cut, tumbled)	1 inch	2050 lb	145 sq ft	11"x11", 22"x11" - Full crates only 22"x22", 32.5"x22"
Harbour Grey Calibrated 4-Piece Pattern Pack (Natural, machine cut, tumbled)	1 inch	2450 lb	175 sq ft	12"x12", 24"x12" - Full crates only 24"x24", 24"x35.5"
18"x36" Calibrated Single Size Pack	1 inch	2395 lb	171 sq ft	18"x36"
24"x24" Calibrated Single Size Pack	1 inch	2290 lb	160 sq ft	24"x24"
Coping with Eased Edge	2 inches	3250 lb	25/crate	14"x48"

\* Single sizes & treads may be broken for an additional crate fee

\* All sizes throughout catalog are nominal

## BENEFITS OF LIMESTONE



*Harbour Grey*



*Golden Wheat*

Limestone is a sedimentary stone that is very common all over the world. It is very versatile, durable and consistent in color.

- Indoor and outdoor applications in a wide variety of colors, sizes and finishes
- Dense, sturdy and durable
- Insulating properties allow limestone to not be too hot in the summer, or too cold in the winter



*Golden Wheat*



*Harbour Grey*



*Harbour Grey*



*Midnight*

## COPING & TREADS

The Limestone copings are one size, tumbled and eased edge to match the pattern packs.



Golden Wheat

2"



Harbour Grey

2"



Midnight

2"



Golden Wheat

\* Limestone Treads only come in 14"x48"x1.5"-2"

## BECOMING A DEALER

### Interested in becoming a dealer or buying our products?

Please consult our website or contact our office to find a reputable dealer in your area. We at Savannah Stone Source pride ourselves in our one-on-one, hands-on approach to customer service. We choose high-quality, reputable and reliable product services. If you have any questions or are interested in becoming a dealer, please contact us.

Contact: **Anna Griffin**

Anna@SavannahStoneSource.com | 843-548-7799



## INFORMATION ON OUR MATERIALS



**Color** - Natural Stone will vary with range in both color and movement. It is important to see multiple samples before ordering to approve color.



**Sizes** - All sizes quoted are nominal sizing



**Maintenance** - Some natural stone will have some iron content - this can cause some areas exposed to oxidize. Please ask your distributor to recommend a rust/stain remover. Sealers may or may not be needed - always use an appropriate sealer for natural stone and follow all instructions. Testing on a small piece first is always recommended.



**Installation** - Please refer to your distributor, installer, manufacturer for installation instructions.

*We only offer our products through our distribution network. Please visit our website for distributors near you.*

*Please visit our website Resource tab for additional recommendations on basic installation, best practices, and product recommendations.*



\* Concrete version available by special order



EXQUISITE DISTINCTION  
SUPERIOR QUALITY

(843) 548-7799 | SAVANNAHSTONESOURCE.COM

### SAVANNAH STONE SOURCE & THE ETHICAL TRADING INITIATIVE

Savannah Stone Source is a part of a leading alliance of companies, trade unions and NGOs that promote respect for workers' rights around the globe. As a part of The Ethical Trading Initiative, our vision is a world where all workers are free from exploitation and discrimination, and enjoy conditions of freedom, security and equality.

- Working conditions in the mining of stone are safe and hygenic
- Child labor is not used in the quarrying of stone
- Living wages are paid
- Working hours are not excessive
- No harsh or inhumane treatment is allowed



Special Thanks to Blake Crosby Photography | bcrosby.com





SAVANNAHSTONESOURCE.COM